



# PRCS Coyote Howl

October 18, 2021

## OCTOBER

- 10/18 Makeup Picture Day
- 10/18 – 10/22 THINK WEEK!
- 10/21 California Great Shake Out Drill – see p. 7 & 8
- 10/21 Sizzler Dine Out – see p.15
- 10/22 ES Spirit Day – Kindness Day
- 10/22 Last day for BOO Grams – p. 17
- 10/29 ES / MS Costume Day – see guidelines p. 2
- 10/29 MS only Minimum Day dismissal at 1:25 PM
- 10/29 Howl-o-ween Gala 7:00 PM to Midnight – p. 18

### **Lost and Found Notice!**

Our Lost & Found area is overflowing! There are NUMEROUS jackets, sweatshirts, water bottles, etc. that have been accumulating. Please remind your children to go through the Lost & Found area near the Main Office in search of missing items. **Any leftover items will be donated to a local shelter after school on Friday, October 22<sup>nd</sup>.** Parents can come to look for items at the Lost and Found area near the Main Office ONLY AFTER 3:30 PM due to dismissal.



Join us!

PTA Howl-o-ween Gala

RSVP Link: [Click HERE](#)

Invitation on p. 18

RSVP by October 20th

Space is limited

GIFT Brochure [CLICK HERE](#)



**DONATE TODAY!**

[CLICK HERE](#)

**Principal Demirjie's Message:** Good Evening PRCS Families. Thank you for taking the time to join us for Coffee with the Principal last week. If you were unable to join us, the CWP Presentation is available to view [CLICK HERE](#) or visit our website [goprcs.org](http://goprcs.org) under SCHOOL NEWS.

California Great Shake Out Drill will take place on Thursday, October 21<sup>st</sup> at 9:00 AM. It is the LAUSD Annual Earthquake Drill Practice Day. During an earthquake drill, students and staff will practice dropping, covering, and holding on until the shaking stops. Once the shaking has stopped, teachers will check for injured students in their classroom, and evacuate everyone to the athletic field. We conduct these drills to keep our students safe and to always know what to do in the case of an emergency. Students and visitors will not be able to check in or check out for the duration of the drill. – see p. 7 & 8 [Shake Out Drill Letter](#)

Lost and Found Notice! Our Lost & Found area is overflowing! There are NUMEROUS sweaters, sweatshirts, water bottles, etc. that have been accumulating. Please remind your children to go through the Lost & Found area near the Main Office in search of missing items. Any leftover items will be donated to a local shelter after school on Friday, October 22<sup>nd</sup>. Parents can come to look for items at the Lost and Found area near the Main Office ONLY AFTER 3:30 PM due to dismissal.

Our [GIFT](#) campaign is coming to an end in the next 2 weeks and we need your help. Each year we ask for 100% participation from our families to donate to [GIFT](#). So many of our programs at the school are funded by our [GIFT](#) program. These programs include the dance and theater program, computer class, technology programs and many others that make our school one of the top schools in the area. None of these would be possible without your support. Please visit [supportprcs.org](http://supportprcs.org) and click on the [donate button](#). We have several different levels of giving and each student was sent home with a letter and brochure with the information. We ask that each family support with any amount of contribution to our [GIFT](#) fund and make your [GIFTS](#) in the next few days.

.....continues on p. 2

## Principal's Message continued.....

With the change in the weather, the carline may be busier than ever. We ask our families to please drive safely and follow all the traffic laws. No U-turns, No Left Turns near on MASON or SESNON near the school drop-off or pick-up areas. Please plan accordingly and arrive early for school. If everyone is ready with their [Daily Pass](#) QR Code, masks on and ready with their backpack and lunchbox, staff will be able to expedite check in. During pick-up, please Do Not double-park. Pre-plan a pick-up location where your children can come to you, instead of double parking while you wait for your children. Thank you for your patience and always keeping students and staff safety in mind.

In order to reduce transmission and ensure students can remain on campus in the safest possible environment and receive the best education possible, Los Angeles Unified is now requiring all students who are eligible for the COVID-19 vaccination to be fully vaccinated by Monday, January 10, 2022, unless they have a qualified exemption. Proof of vaccination must be uploaded to the [Daily Pass](#).

Have a wonderful and safe week everyone!

## School Announcements

### **Halloween Costume Day Guidelines: ES and MS Spirit Day on Friday, October 29<sup>th</sup>.**

Students may wear Halloween costumes to school. We encourage you to be creative, dress up and have fun with the spirit of the holiday. The single largest criterion is that costumes may not be demeaning to any person or group based on ethnicity, race, religion, nationality, or disability. Costumes may not cause a significant disruption or distraction to the school program, i.e. no revealing costumes.

- No weapons, or even replica weapons, are to be brought to school.
- No costumes are allowed that completely hide the identity of the student, i.e. masks, gorilla suit, "Scream" character, etc.
- Costumes may not impair a student's vision or movement (e.g., ability to climb stairs).

---

### **KDLP CHOICE for LAUSD Unified Enrollment is now open for 2022 – 2023.**

Please click [HERE for CHOICES Brochure](#).

---

### **Governance School Council Meeting via Zoom:** Thursday, October 21<sup>st</sup> at 4:00 PM.

Register in advance for this meeting:

<https://lausd.zoom.us/meeting/register/tZcscOqorD4rGdDP3F7uImDlvG1F2aj0JsnE>

After registering, you will receive a confirmation email containing information about joining the meeting.

---

### **Booster Club Meeting via Zoom:** Thursday, November 4<sup>th</sup> at 4:00 PM

Zoom: Meeting ID: 810 2942 2291 Passcode: 227928

---

### **PTA Message:**

- Join the PRCS PTA – [JOIN HERE](#)
- Reflections PTA Arts Contest
  - Deadline for entries is November 15<sup>th</sup> – see flyer p.14
- Save the Date! Sizzler Dine Out – October 21<sup>st</sup> – see p. 13
- Boo Grams on Sale NOW! - see p.14
- Howl-o-ween Gala – October 29
  - 7:30 PM – Midnight (formal invitation – see p. 16)



**Weekly Mobile Covid-19 Testing:** Elementary students are scheduled every Monday and middle school students are scheduled every Tuesday. If you still need to give consent for your child/ren to have Covid-19 testing done on campus by the Covid-19 Mobile Unit, please send in the consent form: [CLICK HERE](#) or follow the steps on the [dailypass.lausd.net](https://dailypass.lausd.net) or [CLICK HERE](#)

**LAUSD COVID Testing Center:** Local District Northwest: **Zelzah Testing Center at 6505 Zelzah St, Reseda** for Covid Testing. Appointments for the Stationary Testing Sites can be made via <https://DailyPass.lausd.net>. Zelzah Testing Site is a SYMPTOMATIC and asymptomatic testing site. If your child is SYPTOMATIC, you MUST HAVE AN APPOINTMENT. If your child is a close contact, WALK - IN is available after day 5 if your child is asymptomatic. [FAQ HERE](#)

## Elementary News

**Progress Warning Notices** – If there are any academic or work / study habit concerns, teachers have sent notices home with students. Please check their backpack and if you have any questions, please contact your child's teacher.

**Virtual Parent Teacher Conference Week** – November 15 - November 19

- Elementary Minimum Days: November 15, 17, 18 & 19

**5<sup>th</sup> Grade Spirit Wear Is Here! See p.4**  
**Place your order through google form**  
[CLICK HERE](#)

Order deadline is 10/22/2021



**WELCOME**  
TO FIFTH GRADE

**ES Spirit Day** - Friday, October 22<sup>nd</sup> Kindness Day

**LeaderinMe®**

**Habit #1 Be Proactive!**  
**You are in charge of yourself.**

I have a "can do" attitude and always try my best at everything I do. I follow directions and do the right things without being asked, even when nobody is looking. I choose my actions, attitudes and moods and don't blame others for my wrongdoing.

*K-5<sup>th</sup> Grade*  
**T-SHIRT DESIGN CONTEST**

**Theme:**  
**Mindfulness Matters**

Porter Ranch Community School needs YOUR help to design our 2021-2022 Leader in Me t-shirt. Show your Leader in Me pride with your original design.

- Contest is open to all K - 5<sup>th</sup> grade students.
- Deadline for submissions is **NOVEMBER 2<sup>nd</sup>, 2021**
- Scan a clear picture of your design and submit it with your first and last name, grade, and teacher's name to [prcspublications@gmail.com](mailto:prcspublications@gmail.com).
- Winner will be announced on **November 8<sup>th</sup>, 2021**.

**HELP US DESIGN OUR NEW ELEMENTARY LEADER IN ME T-SHIRT!**



**Directions:**  
Create a design that has a title of four words or less and a hand drawn picture to represent the theme, **MINDFULNESS MATTERS**. Draw the design you want on the t-shirt. Do NOT draw a t-shirt with the design on it.

All designs must be original, **STUDENT DESIGNED**, and outlined in black marker on white 8 1/2 X 11 paper.



# WELCOME TO FIFTH GRADE



**5<sup>th</sup> GRADE SPIRIT WEAR IS HERE!**

**PRCS 5<sup>th</sup> GRADE PAJAMAS**

All items come in the following sizes:

Youth: S, M, L, XL

Adult: S, M, L

## **PRICING:**

**Sweatshirt: \$30**

**T-Shirt: \$15**

**PJ Set: \$45**

**Full set (all 3): \$80**

Please note all items are true to size. Cotton is subject to shrinkage. Pajama pattern is not guaranteed. Final set may have a similar pattern.



## **5<sup>th</sup> GRADE PARENTS**

Place your order through this

<https://forms.gle/arR1hizr6BJamvz36>

Instructions for payment are in the Google Form link

Easy ways to purchase!

● VENMO ● ZELLE ● CHECK

**Don't miss out – order and PAY by October 22, 2021!**

Any questions please email:  
Adrienne Masi - 5<sup>th</sup> Grade Chair  
[adrienne.masi@gmail.com](mailto:adrienne.masi@gmail.com)



# Middle School News

**Message from Counselor, Mrs. Almany:** Counseling office open door hours: I encourage all students to drop in during their elective class. For urgent matters, I am available all periods.

**10 Week Grading Period** closes on Friday, October 15th. Progress Report Cards will be mailed home on Monday, October 18<sup>th</sup>. You can also access your child's Progress Report Cards on the Parent Portal > Progress Reports. **15 Week Grading Period** closes on Friday, November 12th. Progress report cards will be mailed home the week of November 15th.

**8<sup>th</sup> Grade Spirit Wear! Class of 2022 "The Elites". See p. 6**

- Place your order through google form [HERE](#)



**PE clothes are now available for sale** and will continue selling the rest of the week. Please bring the exact amount of money in cash.

- The pair (t-shirt and shorts) will cost \$20.00.
- PE shorts sold individually will cost \$15.00 and T-shirts 10.00

**MS Spirit Day** – Friday, October 29<sup>th</sup> – Costume Day

**MS only minimum day – Friday, October 29. Dismissal at 1:25 PM.** All students will be released to the Sesnon Gate only. Sesnon Gate will close at 1:40 PM. If any students are on campus, they must report to Beyond the Bell Services. If you did not fill out an application for Beyond the Bell, please fill one out and email to Ms. Natalie in the main office at [natalie.bluemke@lausd.net](mailto:natalie.bluemke@lausd.net) or print and turn into Beyond the Bell Coach.

**Student Vaccination Requirement:** All students who are 12 years of age and older must receive their first Covid-19 vaccine dose by no later than November 21, 2021 and their second dose by no later than December 19, 2021. All other students must receive their first vaccine dose by no later than 30 days after their 12th birthday, and their second dose by no later than 8 weeks after their 12th birthday. See p. 9 – 13.

- Students and families that have questions or concerns regarding the vaccine are encouraged to call our family hotline at 213-443-1300 and review our [Frequently Asked Questions](#)

## Sesnon Gate

- Morning drop off at **Sesnon Gate closes at 8:20 AM. NO DOUBLE PARKING!!!**
  - If the Sesnon Gate is closed, please go to the main office carline or walk up gate.
  - Must wait in the carline to be checked in by staff with a Dailypass QR Code.
- After school pick up at Sesnon Gate will close at:
  - 3:42 PM for regular schedule
  - 2:20 PM for early Tuesday dismissal
  - 1:40 PM for Minimum Days
    - On middle school only minimum days, after 1:40 PM, students will need to exit through the main office until elementary is dismissed.
  - NO DOUBLE PARKING!!!**
  - Do not park on the north side of Sesnon Ave and ask child/ren to run across traffic. This is very dangerous, and we ask that you take the extra time to pick them up properly at curb side or walk up to pick up the students. We thank you for your cooperation to keep everyone safe.**



# SPIRIT WEAR

**8<sup>th</sup> Grade Class of 2022**

**"The Elites"**

**"To be elite is not a status of society, but a status of one's character."**

Following sizes  
available:

Adult:  
XS, S, M, L, XL and XXL

**PRICING:**

T-Shirt: \$15

Sweatshirt: \$30

Personalized sleeve of  
sweatshirt: \$7

\*T Shirts are 100% cotton.

\*\*Sweatshirts are 50/50 Blend.



Place your order through this

<https://forms.gle/JmTFEakFomYHrTxHA>

Instructions for payment are in the Google Form link

Easy ways to purchase!

● VENMO ● ZELLE ● CHECK

**Don't miss out – order and PAY by November 1, 2021**



**\*\* Shout out to Ashley Moon for designing the logo for this year's 8<sup>th</sup> grade class\*\***

Any questions please email: Alice Lee - 8<sup>th</sup> Grade Chair

[alice534@hotmail.com](mailto:alice534@hotmail.com)



**LOS ANGELES UNIFIED SCHOOL DISTRICT**  
**Porter Ranch Community School**  
12450 Mason Avenue, Porter Ranch, CA 91326  
Telephone: (818) 709.7100 Fax: (818) 993.1363

*Megan K. Reilly,*  
Interim Superintendent of Schools  
*Joseph Nacorda*  
Local District Superintendent, NW  
*Avak Demirjie*  
Principal  
*Ivet Diaz-Sawyer*  
Assistant Principal

October 13, 2021

Dear Parents:

**RE: SHAKE OUT DRILL – OCTOBER 21, 2021**

It is the LAUSD Annual Earthquake Drill Practice Day. Our campus will practice this with all our staff and students on this day. During an earthquake drill, students and staff will practice dropping, covering, and holding on until the shaking stops. Once the shaking has stopped, teachers will check for injured students in their classroom, and evacuate everyone to the athletic field. Evacuation is necessary following an earthquake because of possible damage to the buildings and aftershocks. Each teacher has a designated area on the field for their students, and all students will be accounted for.

Teams of school staff members conduct search and rescue, emergency first aid, and other disaster operations following an earthquake. Practice request and reunion gate stations are set up at each school site to allow parents to take students home. Request Gate will now be at the Middle School gate and the Reunion Gate will be at the Bike gate in the parking lot near the field.

If there has been earthquake damage to our school, students will not be allowed to re-enter the buildings until they have been thoroughly inspected by the Office of Environmental Health and Safety.

We conduct these drills to keep our students safe and to always know what to do in the case of an emergency.

Sincerely,

Avak Demirjie  
Principal

**TO:** ALL Porter Ranch Community School Families

**RE: REQUEST AND REUNION GATES**

The PRCS Safety Committee is focused on making sure our families are familiar with the LAUSD Emergency Response Procedures. Please remember if there is an emergency at school, such as an earthquake or lockdown, the students will be kept safe until you can come and pick them up.

Please take a few moments to review the following important LAUSD Emergency Protocol:

***NOTE: Identification is required for student pick up and the adult must be on the emergency card.***

- Go to the **"REQUEST GATE"** which is located on Sesnon Blvd. between the Middle School building and the Gym.
- Show I.D. and request child/children  
Pick up your child/children at the **"REUNION GATE"** which is located on Mason Ave. near East of the Main Office.
- If there was a fire in the surrounding area, PRCS would evacuate to the nearest Safe School Site (most likely Germain St. Elementary School located at 20730 Germain St. in Chatsworth 91311 - 818-341-5821).

PRCS participates in monthly emergency preparedness drills. One goal of the training drills is to familiarize the students and staff with the emergency procedures for our school. These drills also improve the school's ability to protect students, save lives, and reduce injuries.

We encourage you to join the PRCS Safety Committee because the safety of our students and staff is one of our highest priorities.

If you would like to join our committee please feel free to attend any Governance School Council Meeting. The dates will be posted to our Website Calendar and the HOWL.

PRCS Safety Committee

10/13/21

Porter Ranch Community School  
12450 Mason Ave., Porter Ranch, CA 91326  
(818) 709-7100

[CLICK HERE TO SEE REQUEST & REUNION MAP](#)





LOS ANGELES UNIFIED SCHOOL DISTRICT



**Safe Steps**  
to Safe Schools

## LAUSD Student Vaccination Requirement - see p. 9 - 13

The science is clear – vaccinations are an essential part of protection against COVID-19. In order to reduce transmission and ensure students can remain on campus in the safest possible environment and receive the best education possible, Los Angeles Unified is now requiring all students who are eligible for the COVID-19 vaccination to be fully vaccinated by Monday, January 10, 2022, unless they have a qualified exemption. Proof of vaccination must be uploaded to the [Daily Pass](#).

**All students who are 12 years of age and older must receive their first vaccine dose by no later than November 21, 2021 and their second dose by no later than December 19, 2021. All other students must receive their first vaccine dose by no later than 30 days after their 12th birthday, and their second dose by no later than 8 weeks after their 12th birthday.**

Students and families that have questions or concerns regarding the vaccine are encouraged to call our family hotline at 213-443-1300 and review our [Frequently Asked Questions](#).

Los Angeles Unified has partnered with a number of health professionals, community clinics, and wellness centers. The following lists offer a weekly overview of all the various clinics and locations for a local district's students, families and employees. Please use this tool to see where clinics are offered, hours of operation, and what you need to do to make an appointment or walk on! These schedules will be updated every Saturday. [Local District Northwest](#)

**To make a vaccination appointment, please visit [dailypass.lausd.net](https://dailypass.lausd.net).**

For the latest information on our vaccine clinics, please visit <https://achieve.lausd.net/covidvaccineappt>.

**News release:** [Los Angeles Unified to Require All Students 12 and Older to be Vaccinated Against COVID-19 by January 10, 2022](#)

## Los Angeles Unified Student COVID Vaccination Initiative

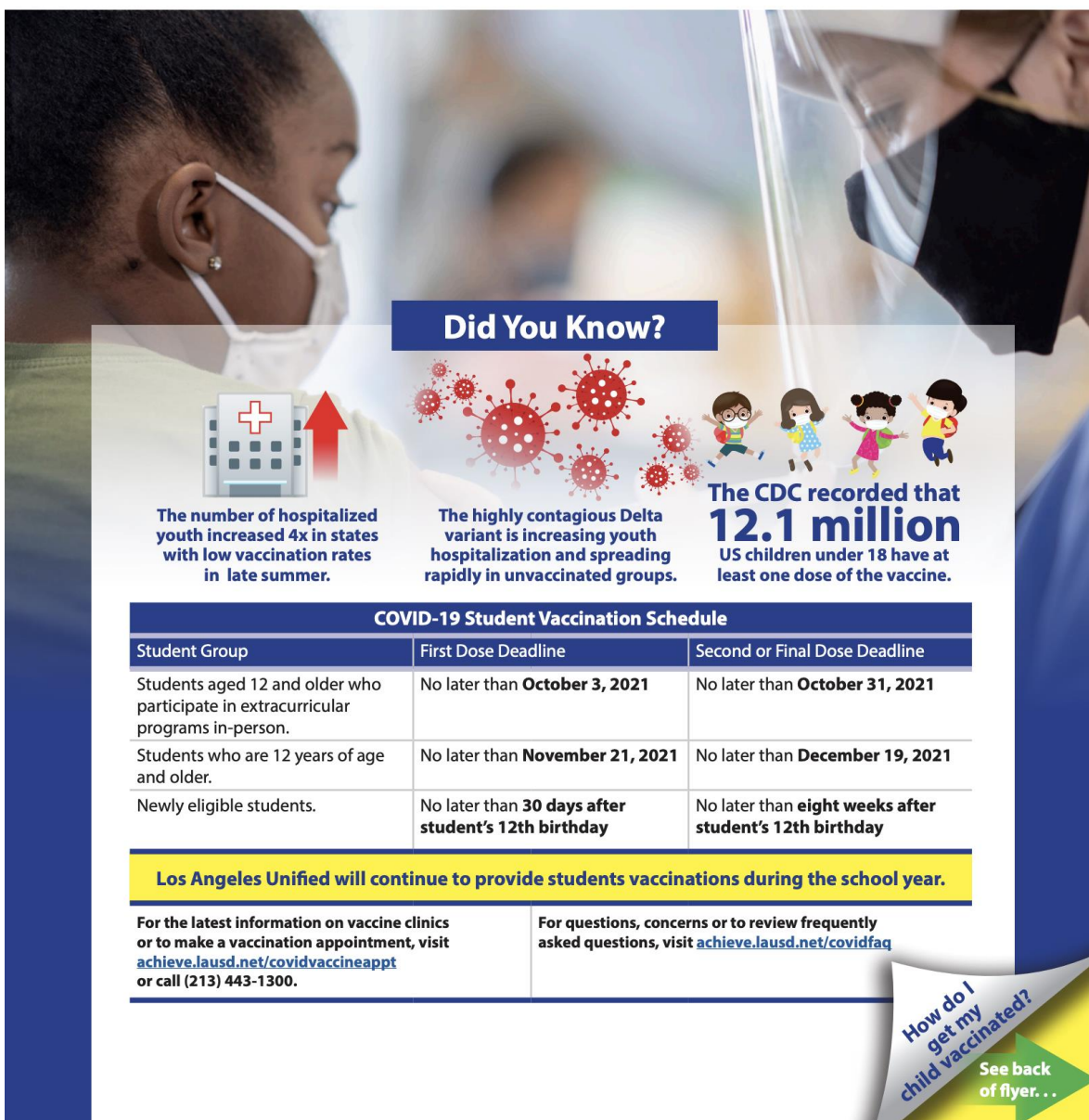
Los Angeles Unified is committed to providing access to vaccinations for our students ages 12+ and staff.

Here's a quick [guide](#) to make an appointment.




# What to Know about Student Vaccinations at Los Angeles Unified


**The science is clear** – vaccinations are a safe, effective and essential part of protection against COVID-19. **The benefits of the vaccine continue to outweigh the risks and the Centers for Disease Control and Prevention (CDC) recommends that everyone 12 and older get vaccinated.**




### Did You Know?



The number of hospitalized youth increased 4x in states with low vaccination rates in late summer.



The highly contagious Delta variant is increasing youth hospitalization and spreading rapidly in unvaccinated groups.



The CDC recorded that **12.1 million** US children under 18 have at least one dose of the vaccine.

COVID-19 Student Vaccination Schedule		
Student Group	First Dose Deadline	Second or Final Dose Deadline
Students aged 12 and older who participate in extracurricular programs in-person.	No later than <b>October 3, 2021</b>	No later than <b>October 31, 2021</b>
Students who are 12 years of age and older.	No later than <b>November 21, 2021</b>	No later than <b>December 19, 2021</b>
Newly eligible students.	No later than <b>30 days after student's 12th birthday</b>	No later than <b>eight weeks after student's 12th birthday</b>

**Los Angeles Unified will continue to provide students vaccinations during the school year.**

For the latest information on vaccine clinics or to make a vaccination appointment, visit [achieve.lausd.net/covidvaccineappt](https://achieve.lausd.net/covidvaccineappt) or call (213) 443-1300.

For questions, concerns or to review frequently asked questions, visit [achieve.lausd.net/covidfaq](https://achieve.lausd.net/covidfaq)

**How do I get my child vaccinated?**  
See back of flyer...



# How to Get Your Child Vaccinated at Los Angeles Unified

## My child has been vaccinated, but I have not submitted proof of vaccination to Los Angeles Unified:

1. Take a photo of the vaccine card that you received the day your child was vaccinated.
2. Log onto the Daily Pass to submit a photo of your eligible child's vaccine card. For help, review our step-by-step guide here: [bit.ly/DPUploadExtVacc1Pager](https://bit.ly/DPUploadExtVacc1Pager).
3. Upload image and press submit. Please note, approval for this process can take up to a week.

## My child has not been vaccinated:

1. Visit the District's COVID-19 Vaccine Appointment Page ([achieve.lausd.net/covidvaccineappt](https://achieve.lausd.net/covidvaccineappt)) to review the student vaccination initiative and learn how to prepare for your student's vaccine.
2. Book a vaccination appointment.



**Option 1:** Take advantage of our mobile clinics visiting your child's school! Schedule an appointment in Daily Pass. A step-by-step guide is here: [bit.ly/DPBookVaccAppt1Pager](https://bit.ly/DPBookVaccAppt1Pager). Walk-ins are also welcome!

**Option 2:** Find a clinic near you! Hours, locations, and instructions for appointments through trusted health partners ([bit.ly/LAUnifiedClinicPartners](https://bit.ly/LAUnifiedClinicPartners)) or LA County Sites ([bit.ly/LACountyVaxSites](https://bit.ly/LACountyVaxSites)). After your child is vaccinated at one of these sites, make sure to follow steps 1-3 above to upload proof onto the Daily Pass.

## For Children with Qualified Medical Exemptions or Conditional Admissions:

Los Angeles Unified families can submit qualified medical exemptions. Please note that similar to other childhood vaccines, there are no personal or religious belief exemptions. Families can obtain a copy of the exemption letter from their school site at any time and can complete and upload the form for District review onto the Daily Pass starting October 20.

Children in foster care, experiencing homelessness, migrants, in a military family or who have an IEP may qualify for conditional admissions.

**Together, we can help keep our school communities healthy by getting vaccinated.**

For the latest information on vaccine clinics or to make a vaccination appointment, visit [achieve.lausd.net/covidvaccineappt](https://achieve.lausd.net/covidvaccineappt) or call (213) 443-1300.

For questions, concerns or to review frequently asked questions, visit [achieve.lausd.net/covidfaq](https://achieve.lausd.net/covidfaq).

# FREE COVID-19 VACCINATIONS



Vaccination Clinics are Available District-wide for LA Unified families.  
For location, hours, and other detailed information, please contact the community partner at the contact number provided below.

Local District South	
Location	Contact
Cabrillo Elementary	424-296-0749
Carson HS	310- 392-8636
Dymally HS	<a href="https://myturn.ca.gov/">https://myturn.ca.gov/</a>
Fremont HS	323-592-9792
Gardena HS	<a href="https://myturn.ca.gov/">https://myturn.ca.gov/</a>
Harry Bridges	323-499-9972
Jordan HS	<a href="https://myturn.ca.gov/">https://myturn.ca.gov/</a>
Magnolia Science Academy 3/Curtis Middle School	310-861-9950
Maxine Waters Employment Preparation Center	<a href="https://myturn.ca.gov/">https://myturn.ca.gov/</a>
NECC - Wilmington	310-522-8700
Watts Health Care	323-564-4331
Wilmington Cmty. Clinic	310-549-5760
Wilmington MS	323-499-3619

Local District Northwest	
Location	Contact
Canoga Park Health Ctr.	818-792-4949
Monroe HS	818-432-8509
Rinaldi Adult Center	818-792-4949

Local District East	
Location	Contact
Ellen Ochoa Learning Center	323-499-3619
Gage MS	323-826-9449
Garfield HS	323-268-9191
Hollenbeck MS	213-989-7700
Lincoln HS	213-328-3958
MaCES	323-499-3619
Mendez HS	213-328-3958
Roosevelt HS	213-328-3958
Tweedy Learning Center	323-499-3619

Local District West	
Location	Contact
Beethoven ECC	310- 392-8636
Crenshaw HS	323-730-1920 ext. 3
Emerson Community Adult Learning Center	213-328-3958
Hamilton HS	213-328-3958
Le Conte MS	213-328-3958
Middle College High School	<a href="https://myturn.ca.gov/">https://myturn.ca.gov/</a>
University High School	310-392-8636
Washington Prep	213-328-3958
West Hollywood Opportunity Center	213-328-3958

Local District Central	
Location	Contact
Belmont HS	323-644-3888 ext. 702
Clinton MS	213-328-3958
Eisner Health Downtown	213-328-3958
Evans Community Adult School	323-499-3619
Franklin HS	323-499-3619
Irving MS	213-328-3948
Jefferson HS	323-908-4200
Manuals Arts HS	877-612-8299
NECC-Highland Park	323-256-3884
Robert F. Kennedy HS	323-499-3619
Saban Community Clinic - Virgil Health Center	323-653-1990
Sotomayor Arts and Science Magnet	213-328-3958

Local District Northeast	
Location	Contact
Maclay MS	818-792-4949
Newhall Health Center	818-792-4949
North Hollywood Center	818-432-8509
North Valley Occ. Center	818-792-4949
Pacoima Health Center	818-792-4949
San Fernando Health Center	818-792-4949
San Fernando Teen Clinic	818-792-4949
Santa Clarita Health Center	818-792-4949
Sun Valley Health Center	818-792-4949

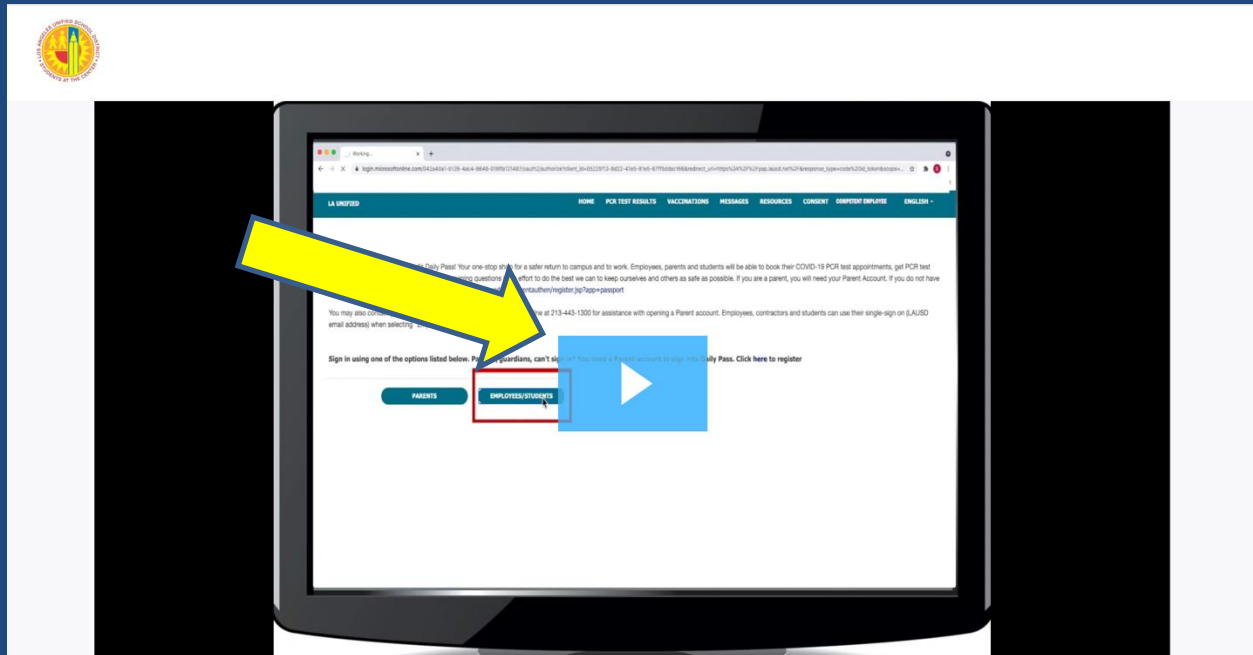


For more information, please visit:  
[achieve.lausd.net/vaccinations](https://achieve.lausd.net/vaccinations)





# COVID-19 External Vaccination Upload Video to dailypass. Click on video below.



**Office of COVID Response**  
**Uploading External COVID-19 Vaccination Record**

This document outlines the steps to upload external COVID-19 vaccination records.

**STEP 1** – Sign in to <https://dailypass.lausd.net> and select "Parent" or "Employee/Student"

**STEP 2** – Select "Submit External COVID-19 Vaccination Record"

**STEP 3** – Select "Self" or "Student"

**STEP 4** – Fill out the vaccine information for either yourself or your student. The student needs to be validated first

**STEP 5** – Upload vaccine record. Check status of your record under "Vaccinations" in the Daily Pass

**STEP 1**  
Sign in to <https://dailypass.lausd.net> and select "Parent" or "Employee/Student".

**STEP 2**  
Select "Submit External COVID-19 Vaccination Record".

**STEP 3**  
Select "Self" or "Student", then Next. (For students, validate student data and then complete entering test results for student.)

**STEP 4**  
Complete vaccine information. Please ensure all information is reflected accurately.

**STEP 5**  
Upload record and Submit. Uploaded vaccination record must include name, date of birth, lot#, vaccination date(s), healthcare professional/clinic site that administered the vaccine.

Check status at the top "Vaccinations" section.

A screenshot of the Daily Pass website showing the vaccination record upload process. The page has a teal header with navigation links: HOME, PCA TEST RESULTS, VACCINATIONS, MESSAGES, RESOURCES, CONTACT, EMPLOYER EMPLOYEES, and ENGLISH. Below the header, there's a section titled "Sign in using one of the options listed below." with three buttons: PARENTS, EMPLOYEES/STUDENTS, and a blue play button overlay. A yellow arrow points to the EMPLOYEES/STUDENTS button.

Uploading External  
COVID-19 Vaccination  
Record. CLICK on flyer.

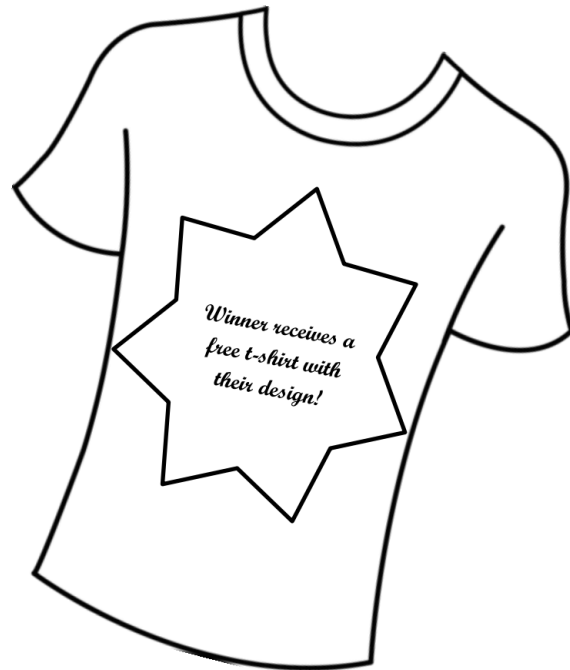
# *K-5<sup>th</sup> Grade* **T-SHIRT DESIGN CONTEST**

**Theme:  
Mindfulness  
Matters**

**Porter Ranch Community  
School needs YOUR help to  
design our 2021-2022  
Leader in Me t-shirt.  
Show your Leader in Me pride  
with your original design.**

- **Contest is open to all K – 5<sup>th</sup> grade students.**
- **Deadline for submissions is NOVEMBER 2<sup>nd</sup>, 2021**
- **Scan a clear picture of your design and submit it with your first and last name, grade, and teacher's name to [prcspublications@gmail.com](mailto:prcspublications@gmail.com).**
- **Winner will be announced on November 8<sup>th</sup>, 2021.**

**HELP US DESIGN OUR  
NEW ELEMENTARY  
LEADER IN ME  
T-SHIRT!**



**Directions:**

**Create a design that has a title of four words or less and a hand drawn picture to represent the theme, MINDFULNESS MATTERS. Draw the design you want on the t-shirt. Do NOT draw a t-shirt with the design on it.**

**All designs must be original, STUDENT DESIGNED, and outlined in black marker on white 8 ½ X 11 paper.**



**PTA**  
everychild.onevoice.®

# Sizzler®

**Fresh  
Salad Bar  
is BACK!**

From U.S.D.A. Choice steaks cut fresh in-house every day, to seafood, fresh salads and soups – all prepared fresh in real kitchens – Sizzler® is the place for great food and value.

Come dine with us at Sizzler on

**Thursday, October 21, 2021**  
**All Day: 11:00am - 9:00pm**

Lunch or Dinner • Dine In or Take Out

Mention PRCS or show this flyer when ordering and Sizzler will give 20% of sales back to Porter Ranch Community School!

Text your receipt from the Dine Out to (818) 314-6988 to be entered into a raffle drawing for a \$25 Sizzler Gift Card for future use. You can win by dining out at Sizzler on October 21st!

**SIZZLER**

20557 DEVONSHIRE STREET  
CHATSWORTH, CA 91311  
(818) 349 - 1900

2021-2022 Reflections Student Entry [HERE](#)

NATIONAL PTA  
**REFLECTIONS®**

**I WILL  
CHANGE  
THE WORLD  
BY...**



DANCE  
CHOREOGRAPHY



MUSIC  
COMPOSITION



FILM  
PRODUCTION



LITERATURE

**EXPLORE THE ARTS AND  
EXPRESS YOURSELF!**



PHOTOGRAPHY



VISUAL ARTS

**2021-2022  
CALL FOR  
ENTRIES!**

**DEADLINE  
FOR ENTRIES:**

November 15, 2021

**FOR DETAILS:**

Simran Bhandohal email:

[Simrankbh@gmail.com](mailto:Simrankbh@gmail.com)

Sahar Khodayari email:

[Sahar.khodayari@gmail.com](mailto:Sahar.khodayari@gmail.com)

Learn more and get involved! [PTA.org/Reflections](https://www.pta.org/Reflections)





**FOR SALE**  
**OCTOBER 11-22**

# BOO GRAMS

*are coming!*

**TELL SOMEONE HOW SPOOKTACULAR THEY  
ARE & SPREAD THE JOY OF THE FALL SEASON**

**SO EASY TO ORDER!**

**CLICK ON LINK OR SCAN QR CODE**

<https://forms.gle/3ro5TJPCE679m6eJ6>



**\$1/EACH**



**\$2/EACH**



**\$5/EACH**

**TK-2 CLASS SET \$25 FOR THE \$1 OPTION**  
**3-5 CLASS SET \$30 FOR THE \$1 OPTION**  
**MS CLASS SET \$40 FOR \$1 OPTION**



Any questions, please email Adrienne Masi at  
[adrienne.masi@gmail.com](mailto:adrienne.masi@gmail.com)

**DELIVERED ON OCTOBER 28**

**\*GOBLINS BEWARE—REMEMBER TO WAIT TIL YOU GET HOME TO EAT YOUR CANDY**

You are invited to the  
**PRCS  
Howl-o-ween Gala**

Friday, October 29, 2021 ~ 7 PM - Midnight  
Porter Valley Country Club

Join us for an evening of dinner, dancing, live music,  
costume contest, photo booth, silent auction of  
classroom baskets, teacher funday auctions, and Casino.

RSVP by October 20, 2021. Space is limited,  
registration will be closed when capacity has been met.

Thank you to our gala sponsors:  
Evan and Jenn Press and



Questions?  
Arezo Abedi  
[Arezo.Abedi@gmail.com](mailto:Arezo.Abedi@gmail.com)  
or Kristi Matassa  
[kmatassa@socal.rr.com](mailto:kmatassa@socal.rr.com)





# PTA MEMBERSHIP CHALLENGE!



Join here!

THANK YOU  
for your  
INVOLVE MINT  
COMMIT MINT  
ENCOURAGE MINT  
INVEST MINT

**\$10 FEE**

Have questions? Please contact  
anjil.lagarwal@gmail or arezo.abedi@gmail.com



from your PRCS PTA  
PLEASE JOIN



Join here!

## PTA MEMBERSHIP COMPETITION!

**ENDS OCT. 29TH**

ELEMENTARY WINNING CLASS:  
**KONA ICE PARTY**

ELEMENTARY WINNING TEACHER:  
**\$50 GUS's GIFT CARD**

Sign up using **QR CODE** or go online.  
Booth on campus first week of Oct.

\*checks made payable to **PRC PTA**

\*\*add name/grade of child when registering



from your PRCS PTA  
PLEASE JOIN

## PTA MEMBERSHIP COMPETITION!

**ENDS OCT. 29TH**

MIDDLE SCHOOL WINNING GRADE:  
**POPSICLES**

MIDDLE SCHOOL WINNING TEACHERS:  
**CHIPOTLE GIFT CARD**

Sign up using **QR CODE** or go online.  
Booth on campus first week of Oct.

\*checks made payable to **PRC PTA**

\*\*add name/grade of child when registering



from your PRCS PTA  
PLEASE JOIN

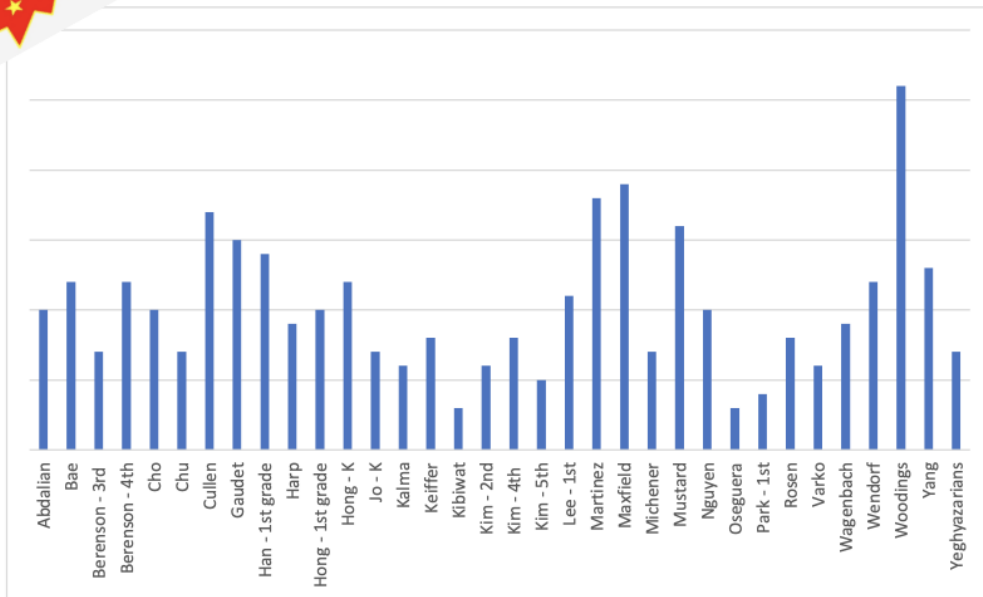
## COMPETITION ENDS OCT. 29th



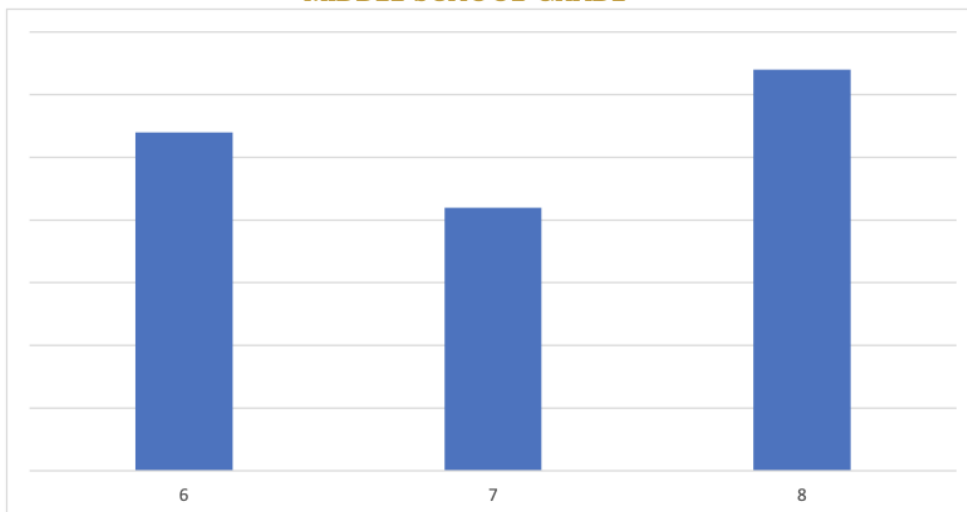
## PTA CLASS COMPETITION RESULTS TO DATE 10/15

Competition Ends 10/29!

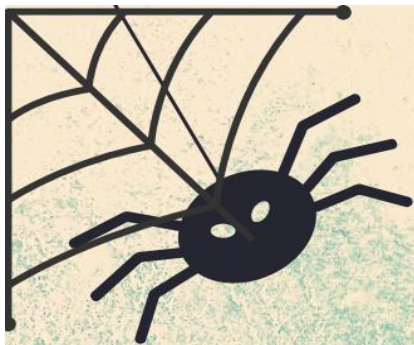
### ELEMENTARTY CLASSES



### MIDDLE SCHOOL GRADE







2021-2022  
ONCE A COYOTE, ALWAYS A COYOTE

# The Yearbook is BACK!

Purchase for \$43 until 12/31/2021!

(PRICE WILL INCREASE, FINAL PRE-ORDER DATE: 3/1/2022)

Students, parents, and staff, don't  
forget to submit pictures to  
[images.jostens.com](https://images.jostens.com) (ID: 416224866)

Final day to submit and create an 8th grade  
dedication: 12/13/2021

*Visit [goprcs.org](https://goprcs.org) for more information*





## A BIRTHDAY BLAST!!

**If you would like to see a  
Special Birthday Message  
on our School Marquee  
please submit the bottom portion  
of this flyer along  
with \$20 (cash only please)!**

### ----- Birthday Blast -----



I have attached \$20 for the Main Office the week prior to my requested date. I would like the Birthday Blast for the

**Monday** of the Week of: \_\_\_\_\_

Student's Name \_\_\_\_\_ Room # \_\_\_\_\_

Student's Birthdate \_\_\_\_\_ Grade \_\_\_\_\_

Parent/Guardian Name \_\_\_\_\_

Parent/Guardian Contact # \_\_\_\_\_

Click [HERE](#) for Birthday Blast Form



**COVID SAFETY:** Please have a conversation with your child/ren about the safety of wearing a mask properly. Students may remove their mask during nutrition and lunch while at the table to eat or drink. Mask must be worn properly for the remainder of the school day, including during recess, lunch and physical activities and PE for middle school.


Covid-19 Testing will continue with the LAUSD Mobile Unit on campus weekly on Mondays and Tuesdays. If you would like to have your child Covid-19 tested on campus, students will need a Covid-19 Testing Consent. Parents can give consent on the Dailypass ([see instruction](#)) or to print, [Click HERE for Consent Form](#). Once the Covid-19 test consent is given, the school site is responsible for testing students. If you are having your child/ren tested at an outside testing agency, test results must be uploaded to [dailypass.lausd.net](https://dailypass.lausd.net) weekly to keep Dailypass current to be on campus. This week, LAUSD Testing Unit will not be on campus. If you would like to test your child for COVID, Northridge Middle School and West Valley Occupational Center will be open on Tuesday, September 7<sup>th</sup>, from 9 am to 7 pm. On campus testing will resume September 13<sup>th</sup> and 14<sup>th</sup>.

The COVID-19 School Report Card dashboard provides daily updates on the reopening status and COVID-19 testing results for the staff and students participating in-person instruction on our campus. All personal names and information will remain confidential. Please go to <https://achieve.lausd.net/covidreportcard> for the most current COVID-19 cases.



## DAILY PASS HELPFUL INFORMATION

Parents – When you click on the DAILY PASS in the Parent Portal or [dailypass.lausd.net](https://dailypass.lausd.net), you will need login with your Parent Portal User Name and Password. If you need the 4-digit Parent Portal Pin Code to link your child see below for instructions.



**Los Angeles Unified School District**

Please log in with your registered email. If you do not have a parent portal account you can copy and paste this link "<https://achieve.lausd.net/register-parent>" in your browser to get started.

User Name

Password

**Sign In**

Need help signing in? [Click here](#)

**Please visit:**  
<https://achieve.lausd.net/dailypass>  
**To view video tutorials and links to Daily Pass!**



### **What is the Parent Portal and how can I access it?**

The [Parent Portal](#) is a website where families may access their child's information and also access resources. The site includes direct link to Schoology and the Daily Pass. Also included in the site is your child's attendance, access to grades and assignments, and access to update emergency contact information to name a few. To open an account visit <https://achieve.lausd.net/Page/10470>. The webpage includes information about the Parent Portal and resources to help you practice its use. Make sure to click on the "Log In/Register" button which will take you to the official log in page. If you do not have an account click on "Register for an account." The page will ask for your name and email. Once you register an email will be sent to you where you will be asked to establish a password. This account is solely for your use. Your spouse/partner must open their own account to access student information.

### **Where can I access my Parent Portal PIN?**

Parents may access their Parent Portal PIN by contacting their school site and come to the main office or email Mrs. Endler at [jennifer.endler@lausd.net](mailto:jennifer.endler@lausd.net) to request a Zoom Appointment to verify a valid ID. Monday thru Friday 9:00 AM – 1:30 PM. For returning students pin codes are printed on their child's School Report Card. If the parent is unable to access the PIN they may also contact the Los Angeles Unified Family Hotline at 213-443-1300



## PRCS & LAUSD Resources

**IT Helpdesk is available at 213-443-1300 or 213-241-3840**

- Parents, students, employees - devices or hot spots tech support
- Hours for IT Helpdesk, Fieldtech - 7:30AM – 4:30PM
- To chat with IT Help Desk Click On: [IT HelpDesk / Chat Live](#) Will need LAUSD Student ID #
- Password/reset issues for Student Mymail - Please contact your teacher

**Tech - Trouble Shooting Tips:** Mymail, Schoology and Parent Resources! LAUSD Schoology resources for students, parents, and teachers can be found on our website at [www.goprcs.org](http://www.goprcs.org) along with other how to tutorials and instructions for different platforms. Under STUDENTS > [TECHNOLOGY SUPPORT](#)

**Device Request go to:** Parent Portal to request or go to our website at [www.goprcs.org](http://www.goprcs.org) click on the Device Request button on the main page or go to [www.device.lausd.net](http://www.device.lausd.net) **PORTER RANCH SCHOOL (1230301)** Once registered, please wait for the school to contact you. This is only for new requests.

### Absence Notes while Online Learning

- **Elementary** – **Parents** can send an email to their child's teacher,
- **Middle School** - **Parents** can send an email to Ms. Laura at [laura.castillo@lausd.net](mailto:laura.castillo@lausd.net)

**Parent Portal Pin Code** – Parents have 2 ways to obtain the Parent Portal Pin Code:

1. Main Office 7:30 AM – 3:00 PM – Covid-19 Safety Protocols are in place.
2. Office Zoom Appointments. Please Email for Jen Endler, Parent Community Rep at [jennifer.endler@lausd.net](mailto:jennifer.endler@lausd.net) **Zoom appointments available 9:00AM – 1:30PM**

**Office hours 7:30 AM – 4:00 PM (818)709-7100**  
**or email us. PRCS updates at [goprcs.org](http://goprcs.org)**

### Elementary K – 5

Lisa Adams email [lisa.adams@lausd.net](mailto:lisa.adams@lausd.net)  
Safia Daks email [safia.daks@lausd.net](mailto:safia.daks@lausd.net)  
Natalie Bluemke [natalie.bluemke@lausd.net](mailto:natalie.bluemke@lausd.net)

### Middle School 6 - 8

Laura Castillo email: [laura.castillo@lausd.net](mailto:laura.castillo@lausd.net)

### General Questions

Donna Patterson email: [dpatte1@lausd.net](mailto:dpatte1@lausd.net)

### Parent Information or the Parent Portal

Jennifer Endler email: [jennifer.endler@lausd.net](mailto:jennifer.endler@lausd.net)

## LAUSD HOTLINE NUMBERS:

General: 213-443-1300

Mental Health: 213-241-3840

Student Health & Human Services [HERE](#)



### Community of Schools

CanogaPark/Chatsworth

747-224-4581 Visit website click [HERE](#)

**Special Education:** 213-241-6701

Or visit [achieve.lausd.net/sped](http://achieve.lausd.net/sped)

**[CLICK HERE FOR MENU](#)**



## Student Menus



**PRCS  
Booster Club**

**[Friends of PRCS](#)**



**Join the PTA Today!**



**[Governing School  
Council \(GSC\)](#)**



**facebook**



**PRCS  
FACEBOOK  
JOIN US - SCAN QR  
CODE OR [CLICK](#)**



FOR CAREER OPPORTUNITIES  
OR A QUOTE – PLEASE CALL  
TODAY!

**818-736-9393**



## PREMIER SPONSOR



**Porter Ranch Community School would like to thank Toll Brothers along with our Councilmember, John Lee, for their continued support and commitment to PRCS.**